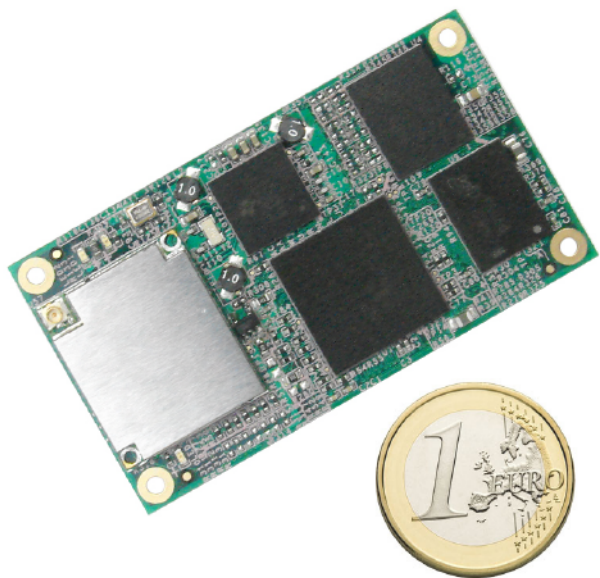


TAO-3530

System on module



Key Features

TI OMAP 3530 application processor with ARM Cortex-A8 CPU and the POWERVR SGX 530 for 2D and 3D graphics acceleration.

Whole spectrum of software support from Windows CE to Linux as well as Android, Qt and OpenEmbedded.

Flexible expansion possibilities by two 100 pin connectors to customize your own interfaces on carrierboards at low cost.

Specifications

System

| | |
|--------------|--|
| CPU | TI OMAP 3530 @ 600Mhz |
| Memory | 128 MB Low power mobile DDR |
| Storage | 256 MB NAND Flash |
| Wireless LAN | Marvell 8686 802.11b/g |
| Supported OS | Linux 2.6.x, Windows CE, OpenEmbedded, Android, Qt |

Interfaces

| | |
|------------|---|
| Connectors | two 100 pin NAIS connectors |
| | SPI, UART, USB HS, USB OTG, I ₂ C, PWM lines, 1-wire, MMC lines, A/D lines, camera, audio in/out, S-Video, LCD interface |

Graphic Capabilities

| | |
|-------------|--------------------------------------|
| Chipset | POWERVR SGX 530 |
| | 10Mpolys/s, up to 720p resolution |
| API support | OpenGL 2.0, OpenGLes 1.1, OpenVG 1.0 |

Power

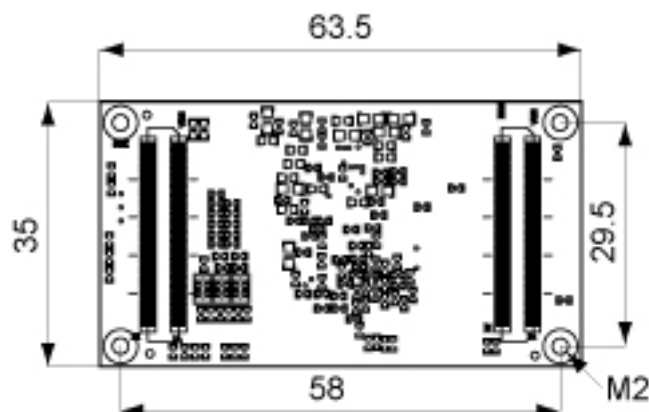
| | |
|--------------------|---------------------------------|
| Power consumption | <2.0 Watt with Wireless enabled |
| Standby | <50 mWatt |
| Power requirements | 1.8V, 3.3V, 5V |

Environmental and Mechanical

| | |
|-------------|---|
| Temperature | Commercial: 0° to 70° C Extended: -20° to 70° C Industrial: -40° to 85° C |
| Humidity | 10-90% |
| Dimensions | 63.5 x 35 x 6.4 mm 2½ x 1⅝ x ¼ inch |
| MTBF | >100,000 hours |
| Weight | 10 grams |
| Shock | 50G / 25ms |
| Vibration | 20G / 0-600 Hz |

Dimensions

units in mm



Order Information

| | |
|-----------|----------------------------|
| TAO-3530 | OMAP3530 |
| TAO-3530W | OMAP3530 with Wireless LAN |

TechNexion

Phone: +886-2-8227-3585
E-mail: sales@technexion.com
Web: <http://www.technexion.com>