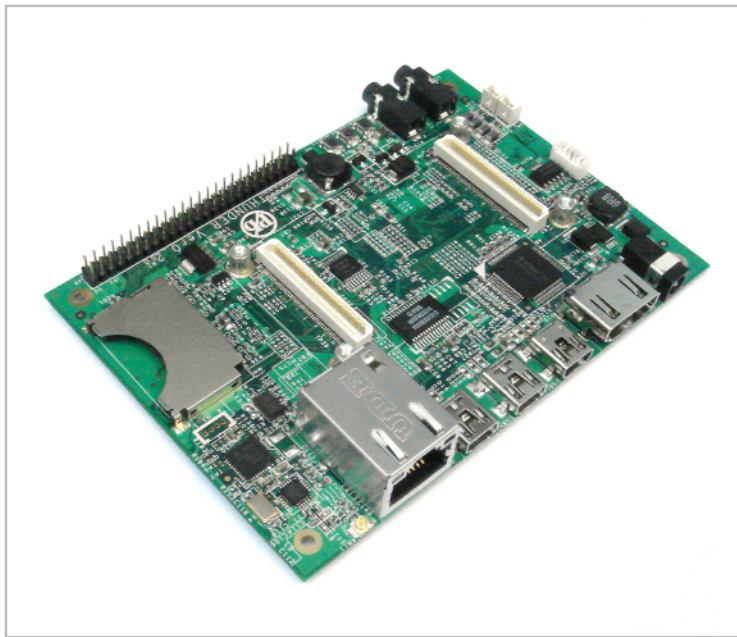


Thunder

Interface Board for TAO-3530 Series



Key Features

Make your device mobile by using the onboard battery interface and 3 axis G-sensor movement detection.

Connect a LCD Flatpanel display with touchscreen interface.

Add more communication ports to TAO-3530 with instant onboard 2.4GHz RF transiever interface and wired LAN.

Create your own multimedia application by using the SD cardreader, audio, speaker and HDMI/DVI interface.

Specifications

System

System on module	Compatible with TAO-3530 by two 100 pin NAIS connectors
Movement Sensor	3 axis G-sensor
RF interface	2.4Ghz instant-on transceiver
Network	SMSC 9500 10/100 Mbps

Interfaces

Connectors	2 mini-USB hosts 1 mini-USB device/ OTG RJ-45 LAN connector SD card slot stereo audio in/out, 3.5 mm 2W amplified speaker battery interface TTL LCD & touchpanel for 4.3" LCD DVI-D signal by HDMI connector SPI, RS-232, UART, I ₂ C, GPIO
50 pin thruhole	

Power

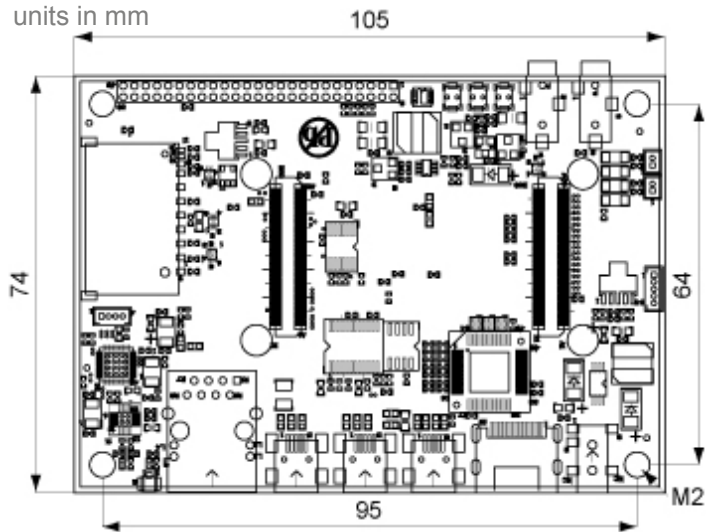
Power requirements	5V DC
--------------------	-------

Environmental and Mechanical

Temperature	Commercial: 0° to 70° C Extended: -20° to 70° C Industrial: -40° to 85° C
Humidity	10-90%
Dimensions	105 x 74 mm 4 $\frac{1}{8}$ x 2 $\frac{7}{8}$ inch
MTBF	>100,000 hours
Weight	42 grams
Shock	50G / 25ms
Vibration	20G / 0-600 Hz

Dimensions

units in mm



Order Information

Thunder	Interface board for TAO series
Thunder pack	TAO-3530W & Thunder & 4.3" LCD

TechNexion

Phone: +886-2-8227-3585
E-mail: sales@technexion.com
Web: <http://www.technexion.com>